



European Commission's plans on coordinated e-Infrastructure ecosystem

Peter SZEGEDI

DG CNECT C.1

European Infrastructure and Data Spaces

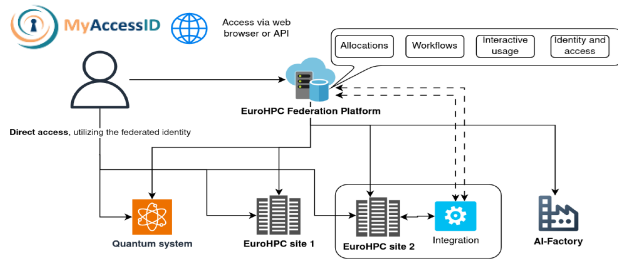
APPS

DATA SPACES

INFRASTRUCTURE

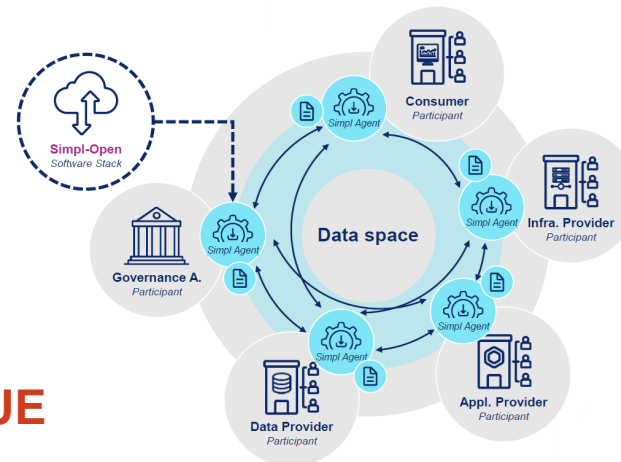


Federation Platform



GLUE

Simpl Middleware



DIGITAL PACKAGE

Digital Omnibus

- Data access
- Cybersecurity
- AI rules

Data Union Strategy

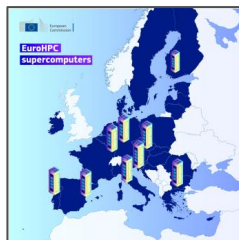
- Common European Data Spaces
- Data Labs
 - Bridging the gap between AI and Data
- Data Governance Act
- Data Act

EUDI Wallet / Business Wallet

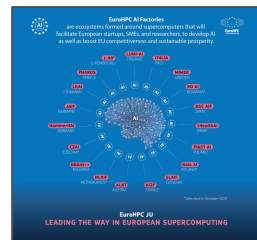
- Identity / Digital Privacy
- GDPR

AI Continent Action Plan

- Invest AI
 - AI Factories/Gigafactories
 - Cloud and AI Development Act
- Apply AI
 - AI is Science
- AI Talent
- AI Act
 - European Chips Act



EuroHPC



AI Factories and Antennas

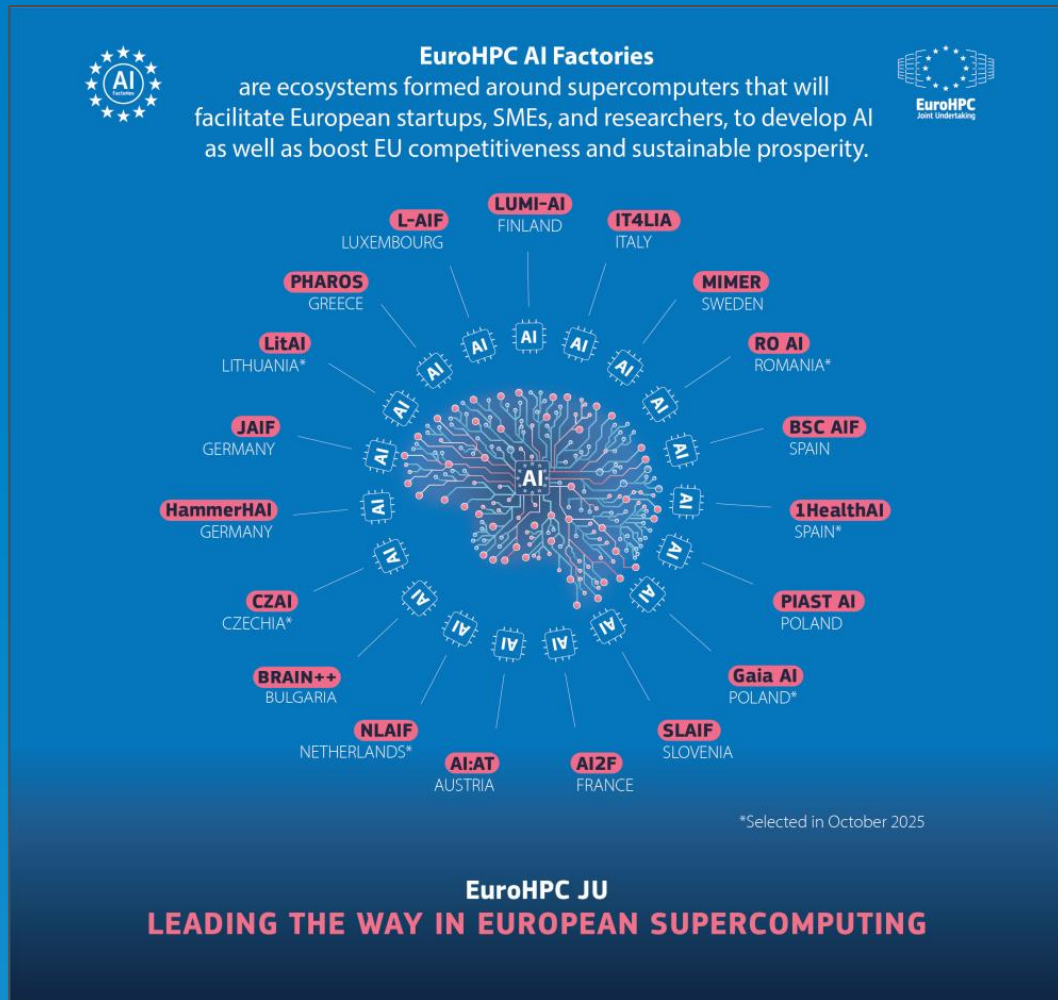


Quantum



Gigafactories

EuroHPC Supercomputers



EuroHPC Supercomputers

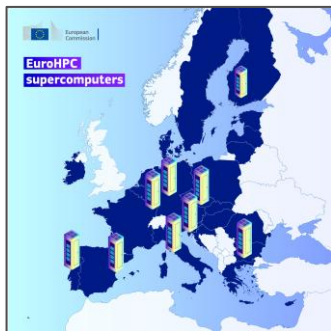
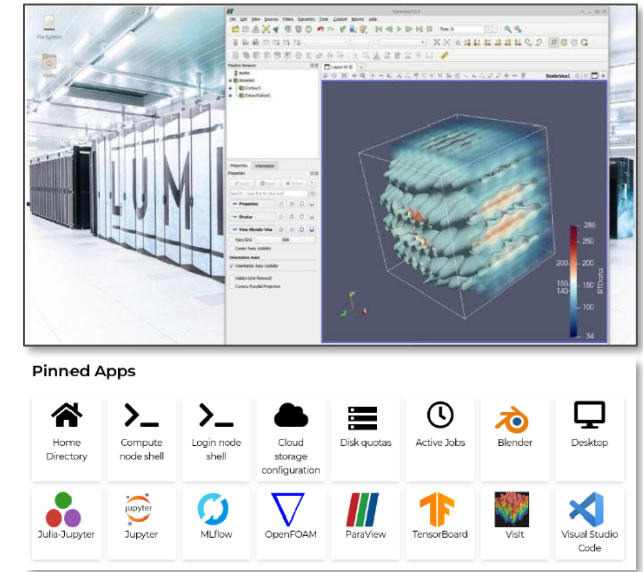
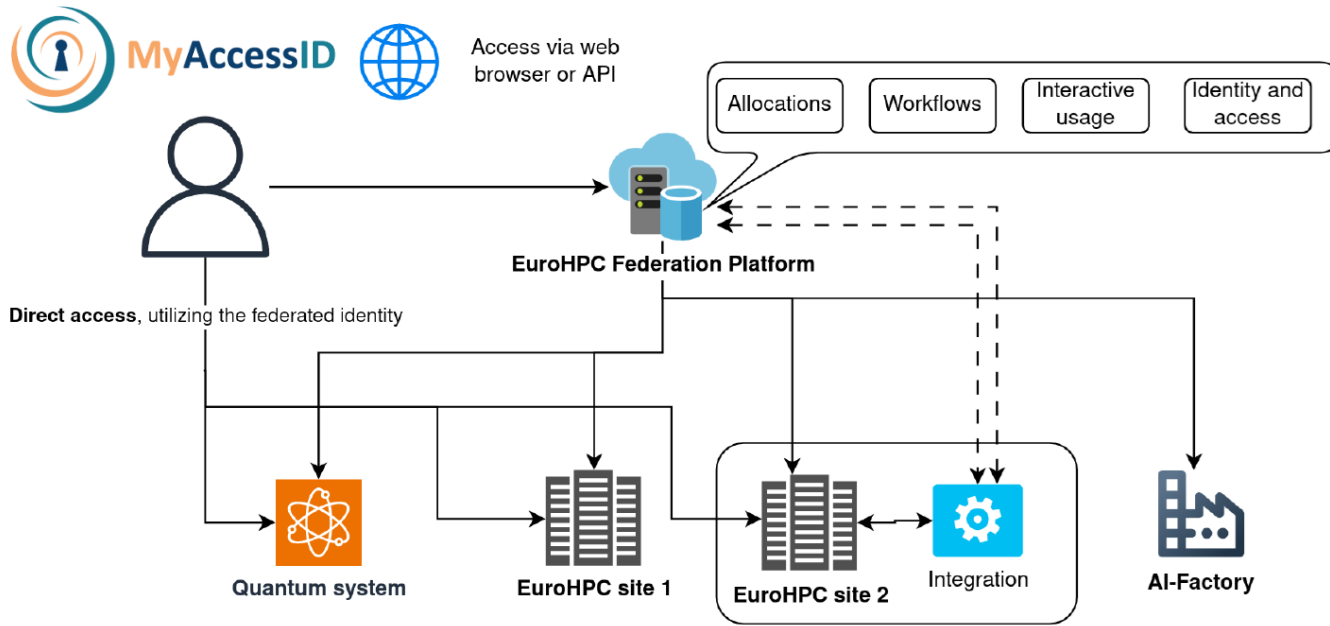


EuroHPC AI Factory Antennas

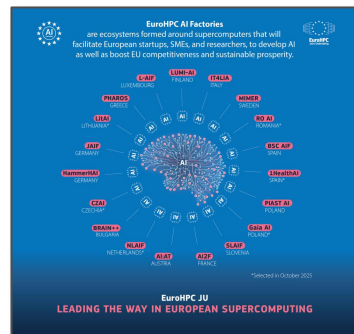


EuroHPC Federation Platform (EFP)

Infrastructure level



EuroHPC



AI Factories and Antennas



Quantum

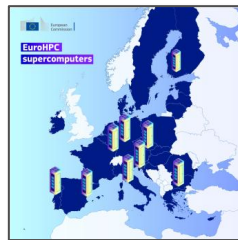
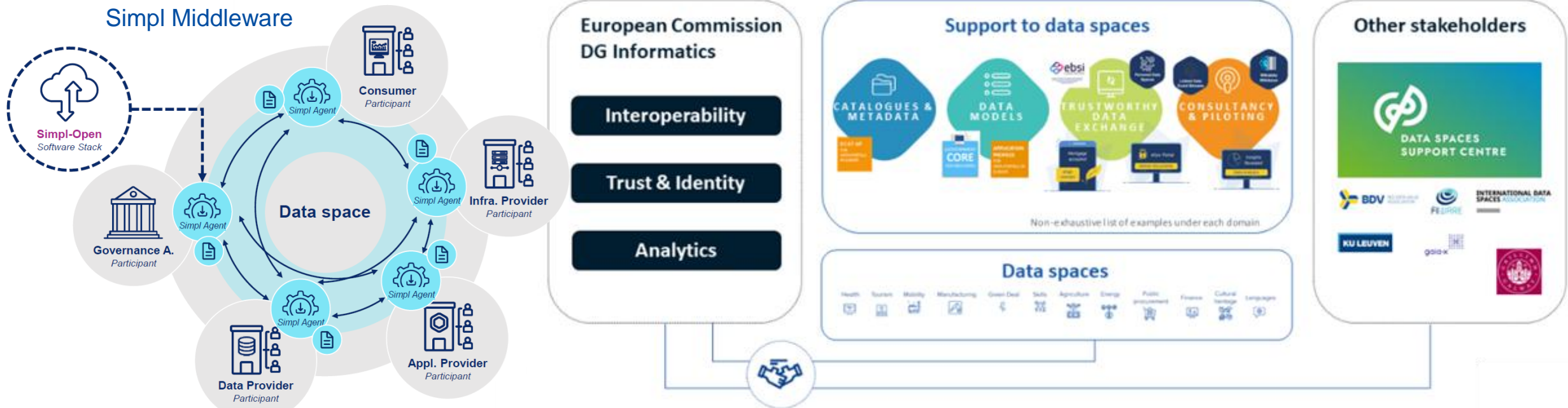


Gigafactories

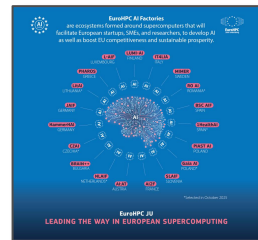


European Data Spaces and Simpl

Data level



EuroHPC



AI Factories and Antennas



Quantum



Gigafactories

DestinE and EOSC EU Node

Application level



DESTINATION EARTH

A DIGITAL REPLICIA OF OUR PLANET

Destination Earth (DestinE) aims to develop a highly accurate digital model of Earth to monitor the effects of natural and human activity on our planet, anticipate extreme events and adapt policies to climate-related challenges.

ANTICIPATE
SIMULATE
UNDERSTAND
MONITOR

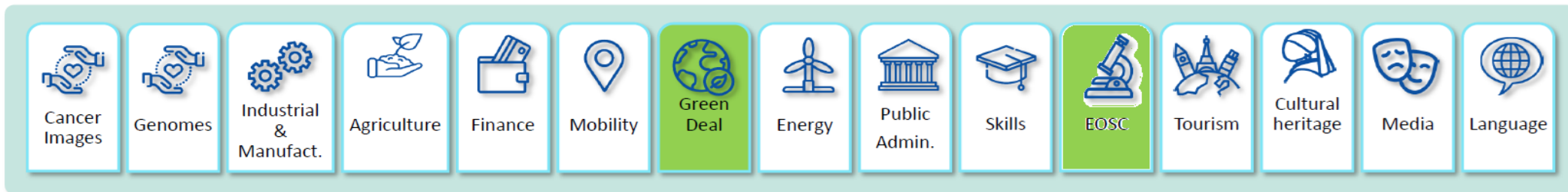
Logos: European Union, ECMWF, esa, EUMETSAT



EOSC EU Node

Advancing Open Science

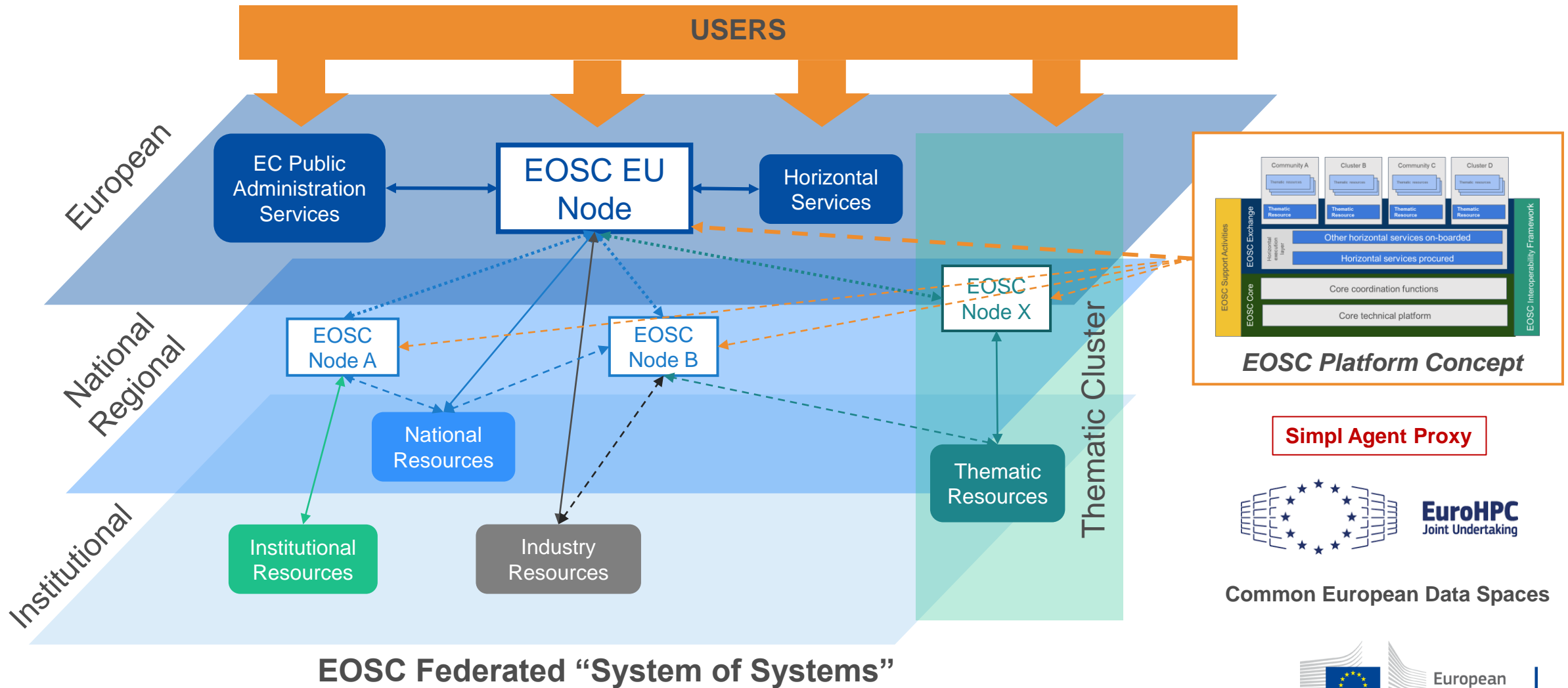
EXAMPLE



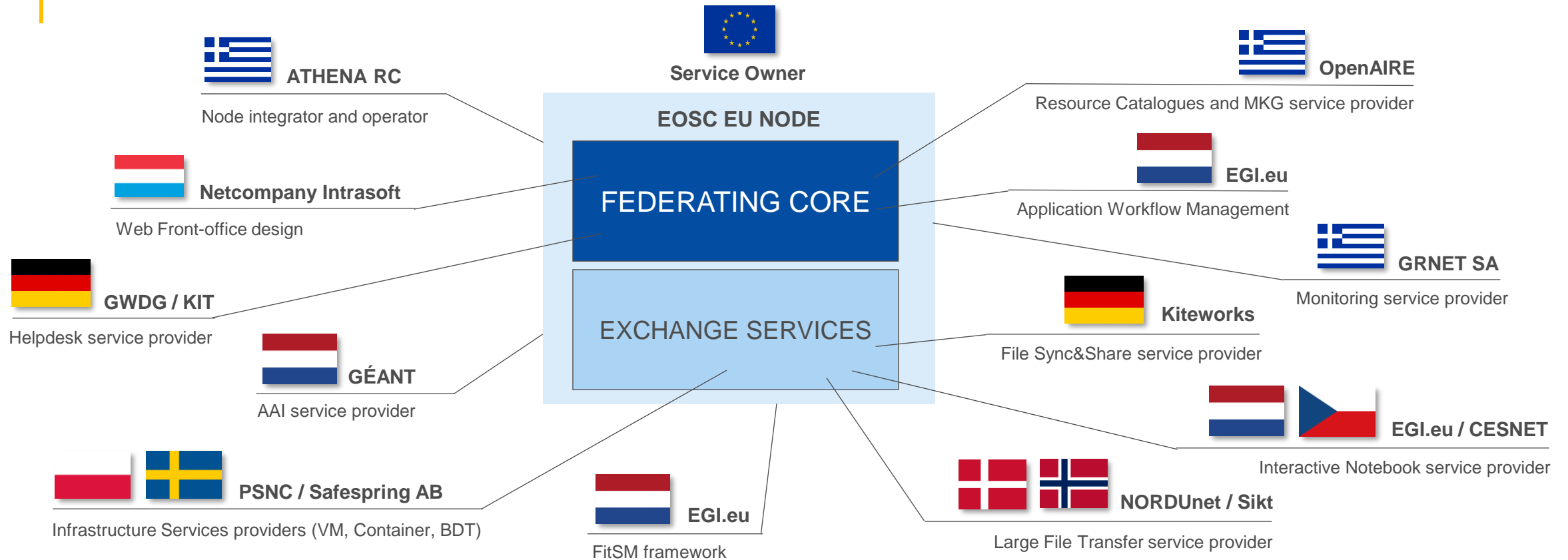
Bar of application areas for EOSC EU Node:

- Cancer Images
- Genomes
- Industrial & Manufact.
- Agriculture
- Finance
- Mobility
- Green Deal**
- Energy
- Public Admin.
- Skills
- EOSC**
- Tourism
- Cultural heritage
- Media
- Language

EOSC EU Node – Federation model



EOSC EU Node (European Commission)

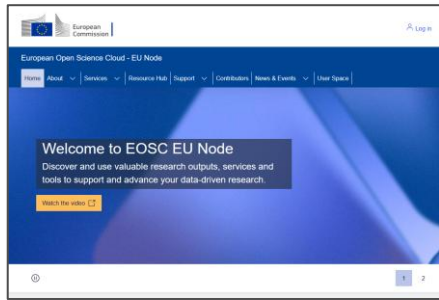


SELECTED NODE CANDIDATES



EOSC Candidate Nodes' landing pages

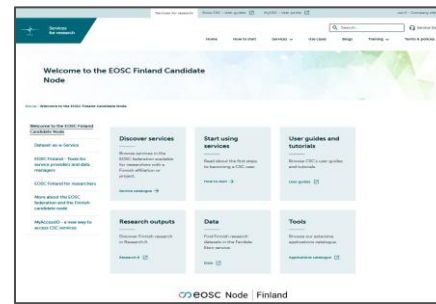
EOSC Node | European Commission



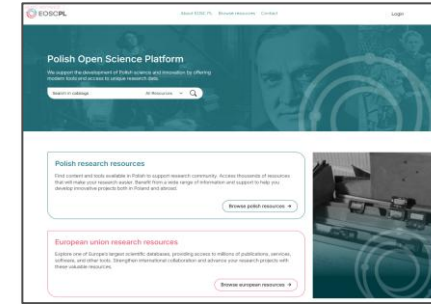
EOSC Node | Italy



EOSC Node | Finland



EOSC Node | Poland



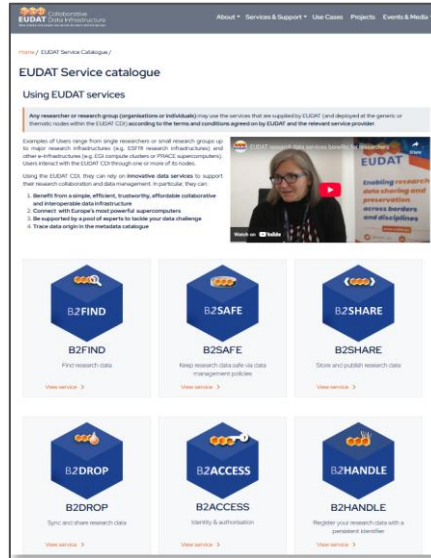
EOSC Node | Germany



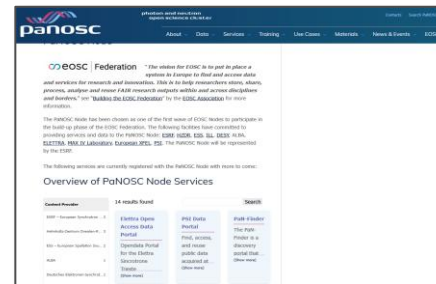
EOSC Node SURF
The Netherlands



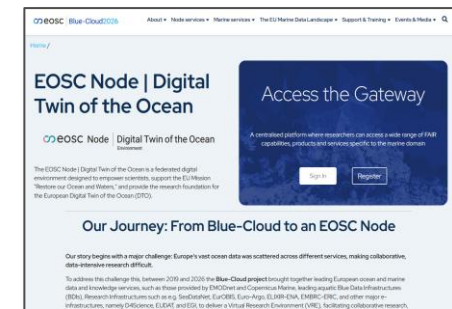
EOSC Node EUDAT
Data, Computing and Digital



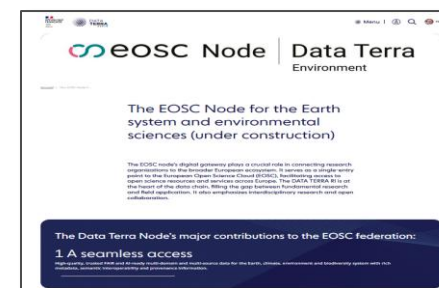
EOSC Node PaNOSC
Physical Sciences & Engineering



EOSC Node Digital Twin of the Ocean
Environment



EOSC Node Data Terra
Environment



See: <https://eosc.eu/building-the-eosc-federation/>



Authentication and Authorization Infrastructure

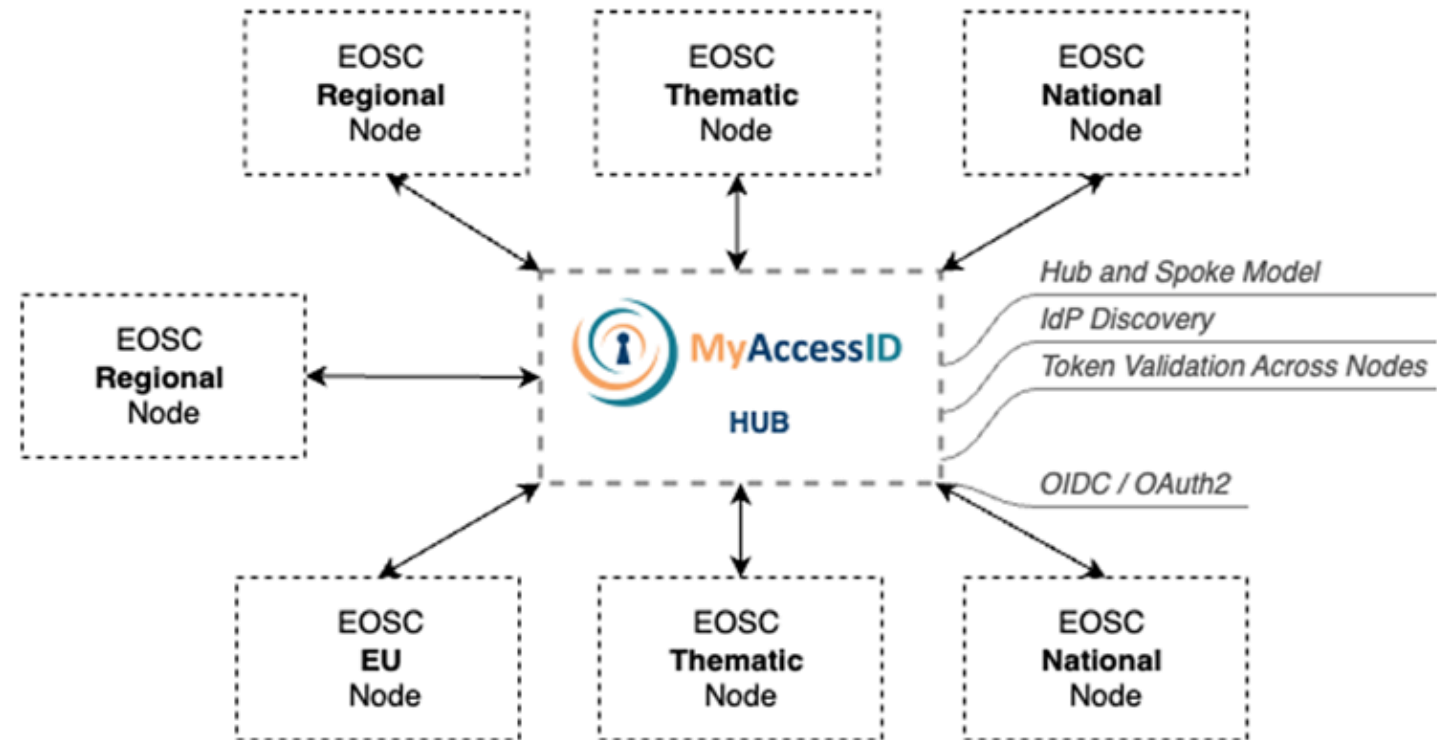
EOSC AAI

Federated AAI services

- B2ACCESS (EUDAT)*
- CSC - Authentication Service (Finland)
- Data Terra AAI (DataTerra)
- D4Science AAI (DTO and Italy)
- [EOSC EU Node AAI / GEANT MyAccessID \(EU Node and identity hub\)](#)
- EOSC PL AAI (Poland)
- Life science AAI (BBMRI and LSC)
- SURF Research Access Management (SURF)*
- UmbrellaID AAI (PaNOSC)

Note the onboarding scenarios: CERN*, Germany*, Slovakia*

* Validations are ongoing (Proxied Token Introspection AARC-G052)



EOSC AAI Federation "hub-and-spoke" model

<https://eosc.eu/news/first-deliverable-from-new-eosc-a-task-forces-released-eosc-aa-architecture-2025/>

EOSC Resource Hub

Services and Data Sources



7 Node Candidates: 69 services

European Open Science Cloud - EU Node

Home | About | Services | **Resource Hub** | Support | Contributors | News & Events | User Space

Home > Resource hub

Advanced Search

Search in services

All resources | Publications | Data | Software | Other Products | **Services** | Tools | Training | Data Sources

Node: EOSC node digital twin of the ocean

- EOSC EU Node (11)
- EOSC Finland Node (5)
- EOSC Node Digital Twin of the Ocean (12)
- EOSC Node Italy (18)
- EOSC Node SURF The Netherlands (4)
- EUDAT (4)
- Photon and Neutron Open Science Cloud (15)

Showing 1 to 12 of 12 resources

SERVICE **OPEN ACCESS**

Language: English

D4Science RStudio

Robust integrated development environment (IDE) for R, tailored to support needs of researchers. By integrating RStudio with D4Science's shared resources, users can perform statistical computing and graphics within a collaborative environment.

Scientific Domain Natural Sciences | Agricultural Sciences | Engineering and Technology

Keywords Academics and Educators · Access Mode Free Conditions of Use · Data Analysis · Engineering and Technology · Processing and Analysis · Data analysis ·

9 Node Candidates: 61 data sources

European Open Science Cloud - EU Node

Home | About | Services | **Resource Hub** | Support | Contributors | News & Events | User Space

Home > Resource hub

Advanced Search

Search in data sources

All resources | Publications | Data | Software | Other Products | Services | Tools | Training | **Data Sources** | Interoperability

Node: Showing 1 to 20 of 61 resources

- Data Terra (1)
- EOSC EU Node (48)
- EOSC Finland Node (2)
- EOSC Node Italy (1)
- EOSC Node Poland (1)
- EOSC Node SURF The Netherlands (2)
- EOSC Node | Digital Twin of the Ocean (2)
- EUDAT (2)
- Photon and Neutron Open Science Cloud (2)

Relevance

DATA SOURCE

Language: English

Blue-Cloud Research

The Blue Cloud Community outputs on Zenodo. Blue-Cloud is a community originating from EU projects. The Blue-Cloud 2026 project has received funding from the European Union's Horizon research and innovation programme under grant agreement No 101094227. The H2020 Blue-Cloud project has received funding from the European Union's Horizon research and innovation programme under grant agreement No 101094227.

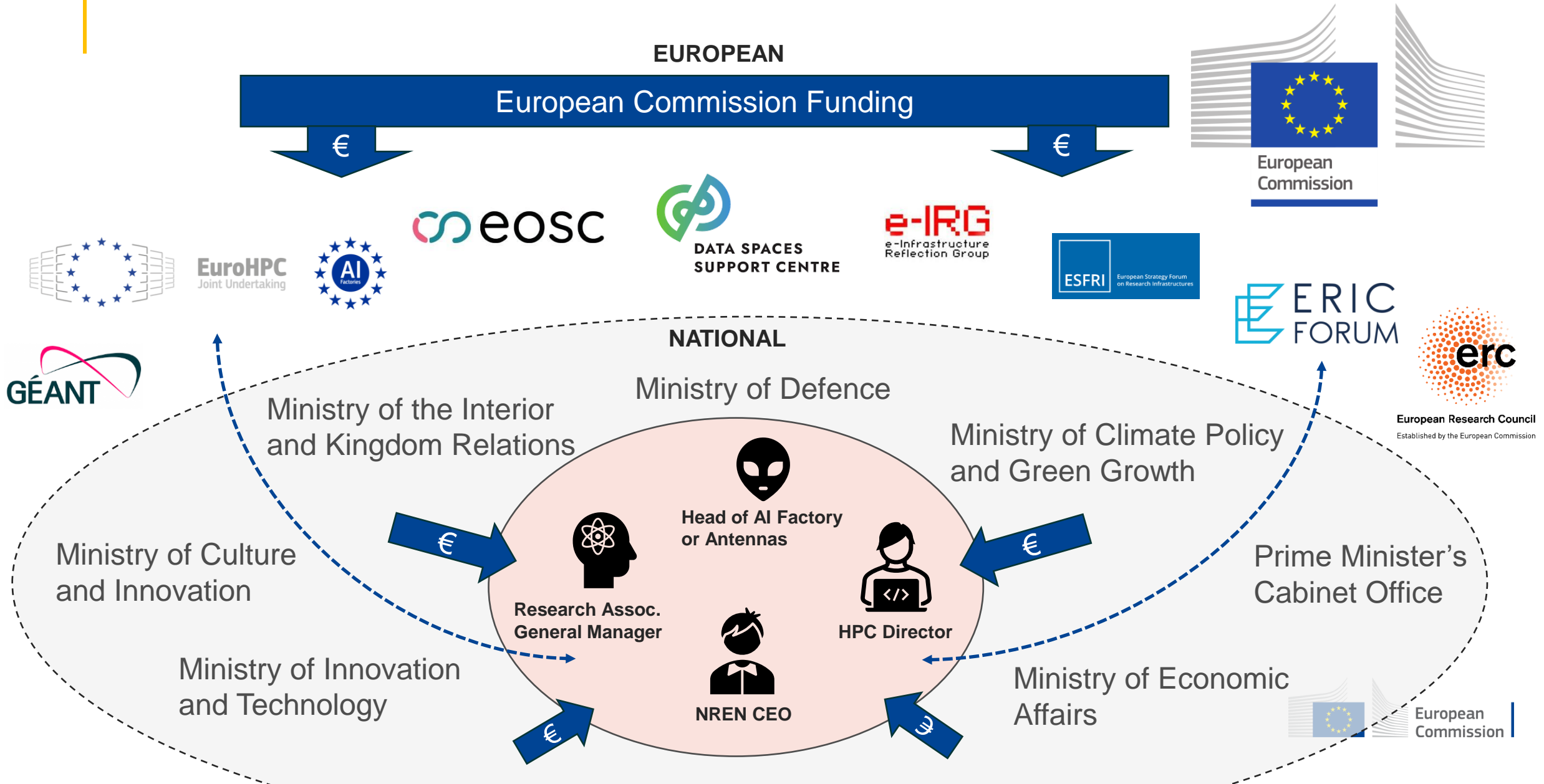
Contributor EOSC Node | Digital Twin of the Ocean

Scientific Domain Natural Sciences

DATA SOURCE **OPEN ACCESS**

Language: English

EC's plans on coordinated e-Infrastructure ecosystem



Closing remarks

E-Infrastructure Commons

- The policy concept (legacy)

EOSC Federation

- An operational manifestation today (via EOSC Nodes)

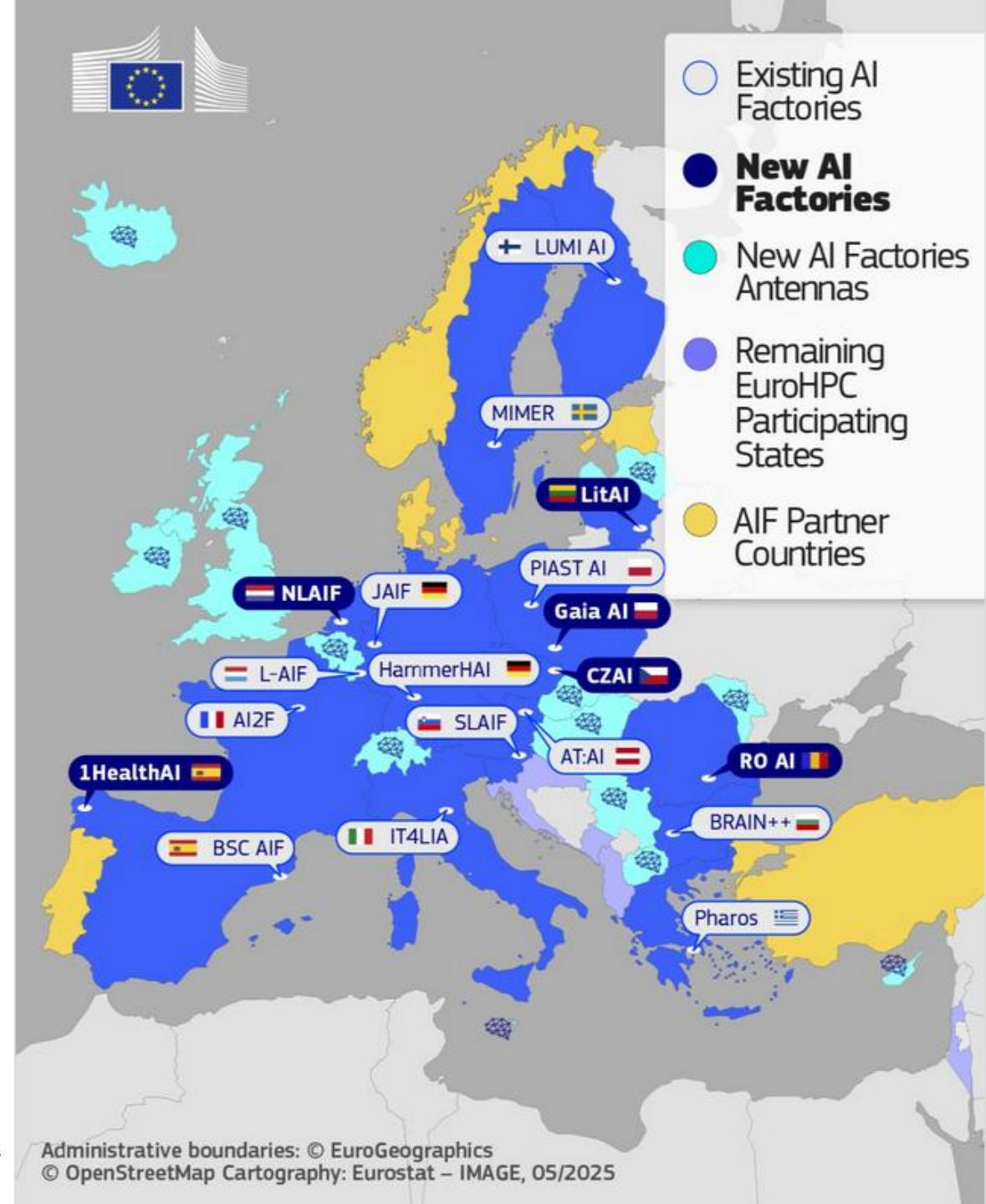
GEANT, EGI, EUDAT, OpenAIRE

- EU-level provides of the Commons

European Strategy on Research and Technology Infrastructures 2025

- [Research infrastructures](#) and [technology infrastructures](#) are the backbone of Europe's research and innovation system. They range from advanced laboratories, large scientific instruments and data centres to pilot lines, testbeds and clean rooms.
- Together, they support the full innovation cycle – from frontier science to the validation and deployment of new technologies. This makes them essential for Europe's scientific excellence, competitiveness and technological sovereignty.

https://research-and-innovation.ec.europa.eu/strategy/strategy-research-and-innovation/our-digital-future/european-strategy-research-and-technology-infrastructures_en



Thank you!

Peter Szegedi
European Commission
DG CNECT C.1 – HPC and Applications