



# EGI – Open infrastructure and open research software for open science

Tiziana Ferrari  
Director, EGI Foundation

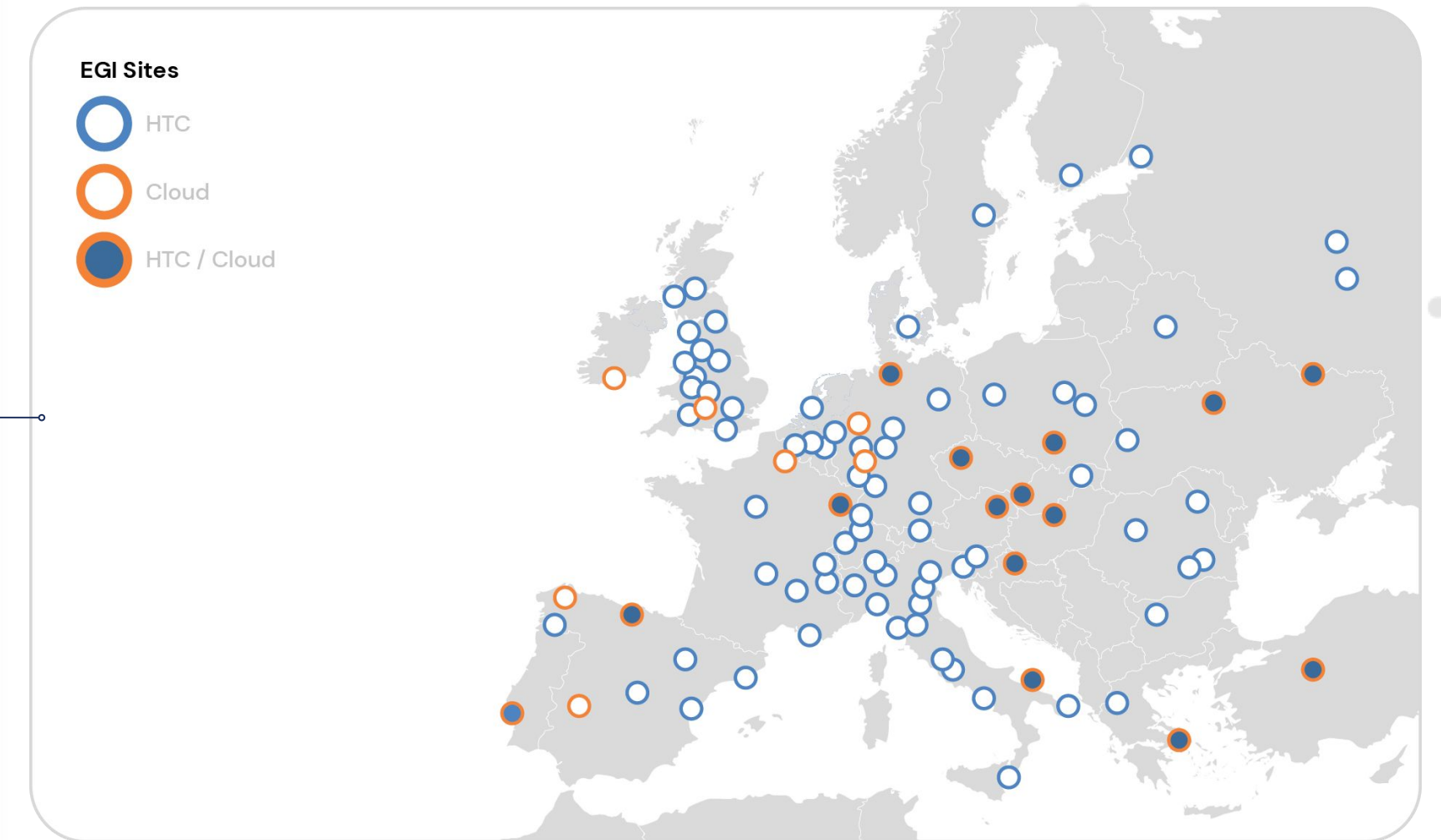
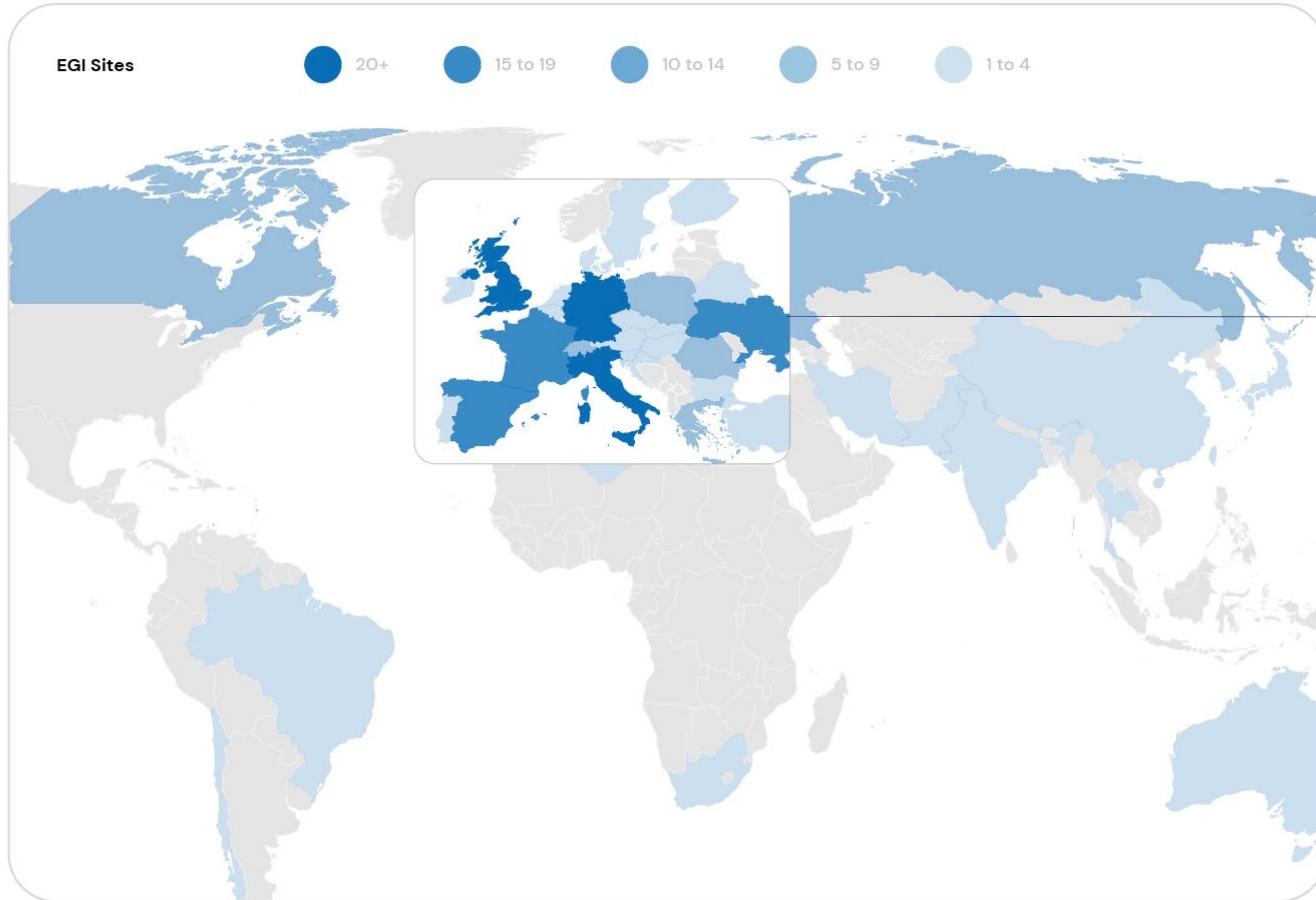
TLP: WHITE Public

05-06-2024  
e-IRG Workshop, Brussels



# Open infrastructures

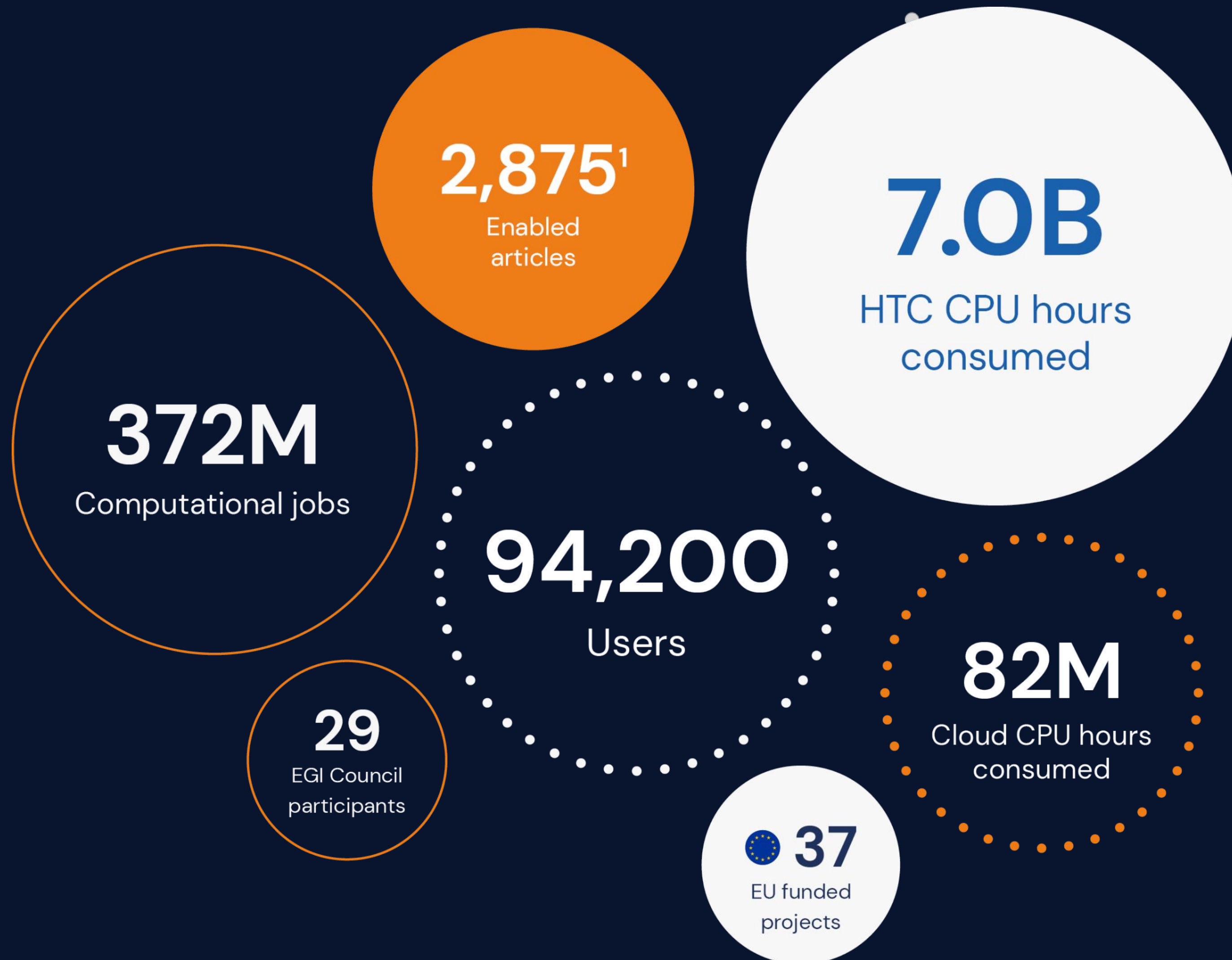
- Support science at international scale
- Build an hyperscale compute facility for research
- Invest nationally, access globally
- Bring computing to the research data







# EGI in Numbers (annual statistics 2023)







# EGI Annual Report 2023

Propelling Research and Innovation  
Through Collaboration and Support



## Key Numbers

**95,000**

Total number of users

**+10.200**

New users in 2023

### Top 5 Cloud Communities

WeNMR

**41K**

NBIS

**21K**

Biomed

**1.5K**

BioISI

**1K**

ENVRI

**967**

By number of registered users

### Top HTC Communities

Atlas, CMS, ALICE, LHCb,  
Belle II, Virgo

### Essential Partners and the Largest Adopters

Research infrastructures (RI) and research communities

**13**

new scientific communities

**23**

RIs from the ESFRI roadmap

**49**

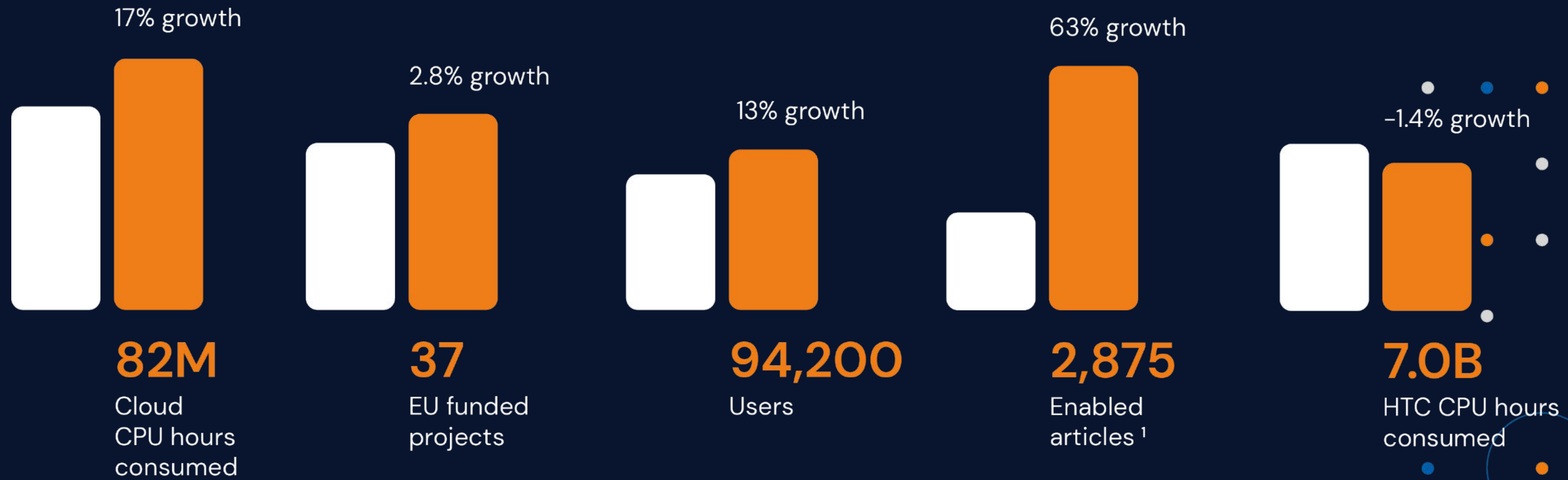
RIs of pan-European scope using our services

**1**

new RIs engaged in 2023



# Trends (2023)



2022

2023



# EGI council participants

- Participant Country
- Associated Participant Country
- Participant
- Associated Participant
- Headquarter of international research organisation or institutional representative

## EGI Council Participants:

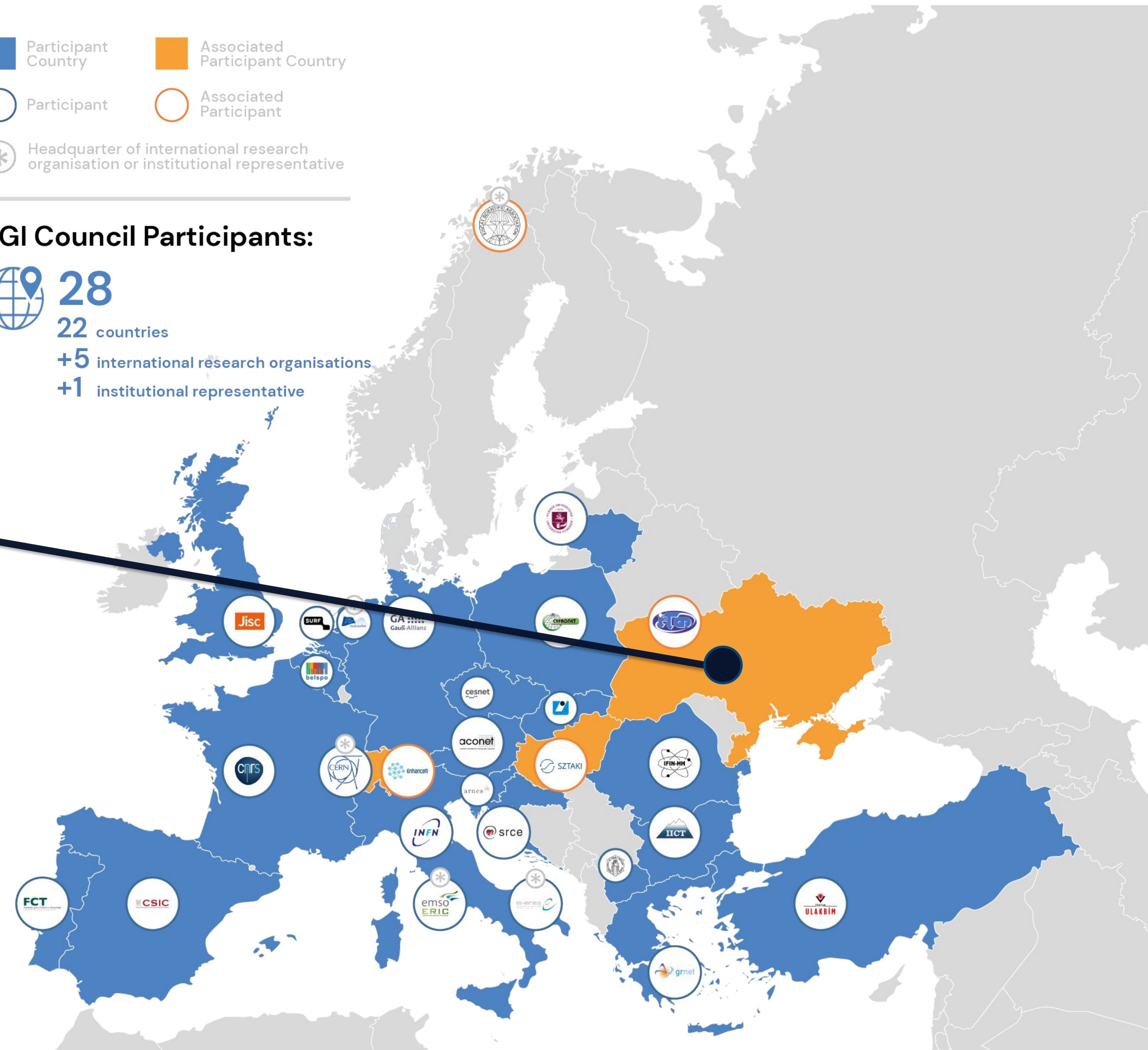
**28**  
22 countries  
+5 international research organisations  
+1 institutional representative



11 HTC  
Data Centres

2 Cloud  
Data Centres

2021-2022 – 6 new members







## +500 publications

The research communities, projects and scientific collaborations from Ukraine supported by the EGI led to more than 500 peer-reviewed scientific publications



- hundreds peer reviewed publications
- 8 (Environmental Sciences, Health and Medicine, Physics, Social Sciences and Humanities)

CTA, DUNE, ELI-NP, LHC, SeaDataNet, WeNMR (Structural biology)

## 8 Supported communities

In 2021, Ukrainian infrastructure supported 8 research communities in the following disciplines:  
Environmental Sciences, Health and Medicine, Physics, Social Sciences and Humanities





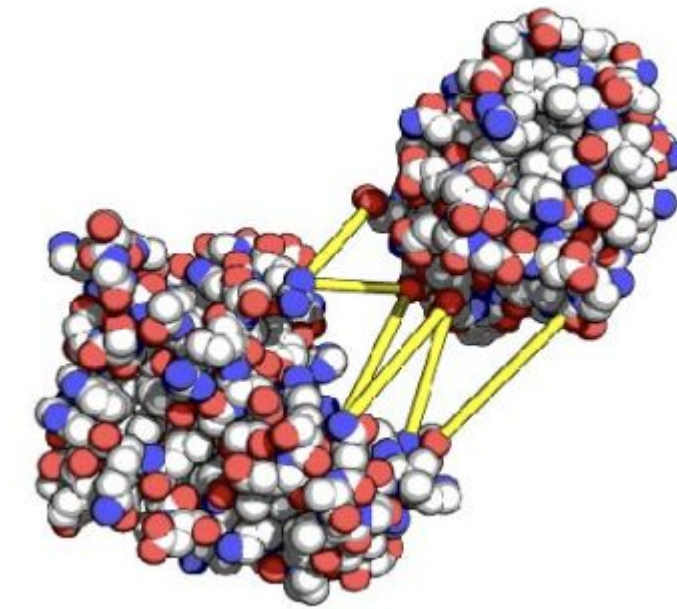
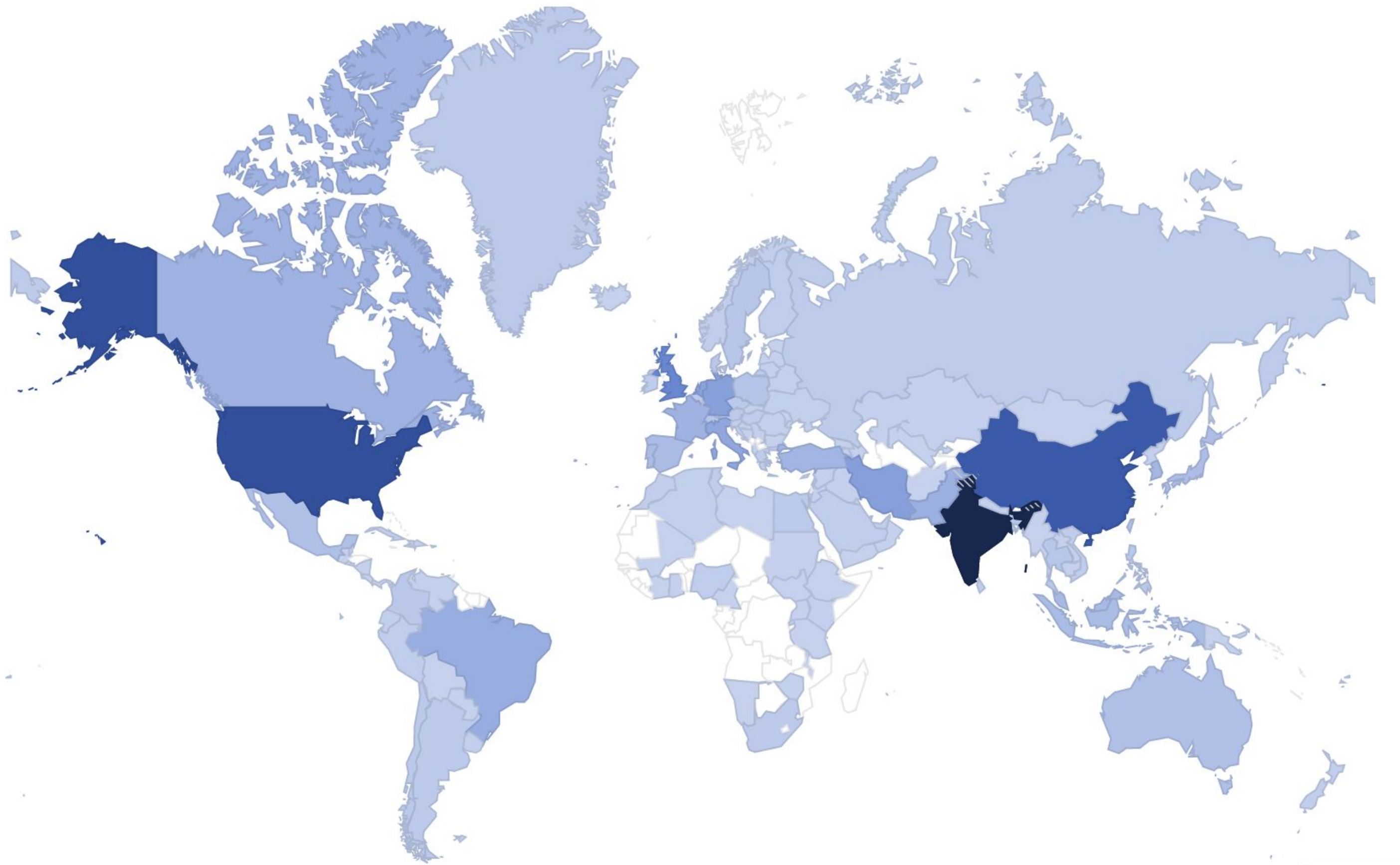


Open software

# Opening tools for molecular docking simulations addressing the COVID-19 pandemic

## Worldwide User Map

The HADDOCK web portal is being used by **46298 users** across **146 countries!**



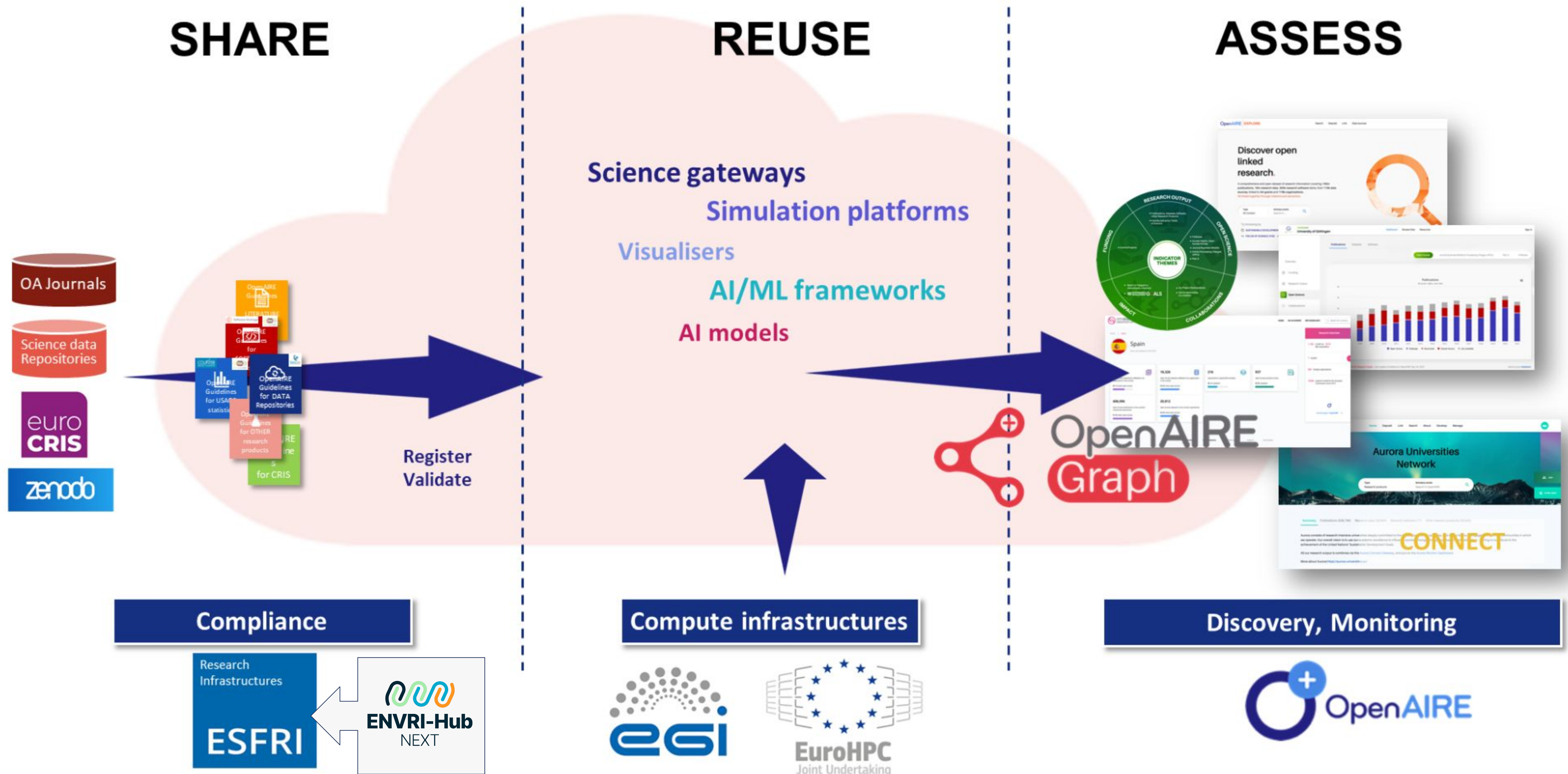
A joint effort of  
WeNMR, EGI  
Federation (Europe),  
Open Science Grid  
(USA) and many other  
international partners





What about open data?

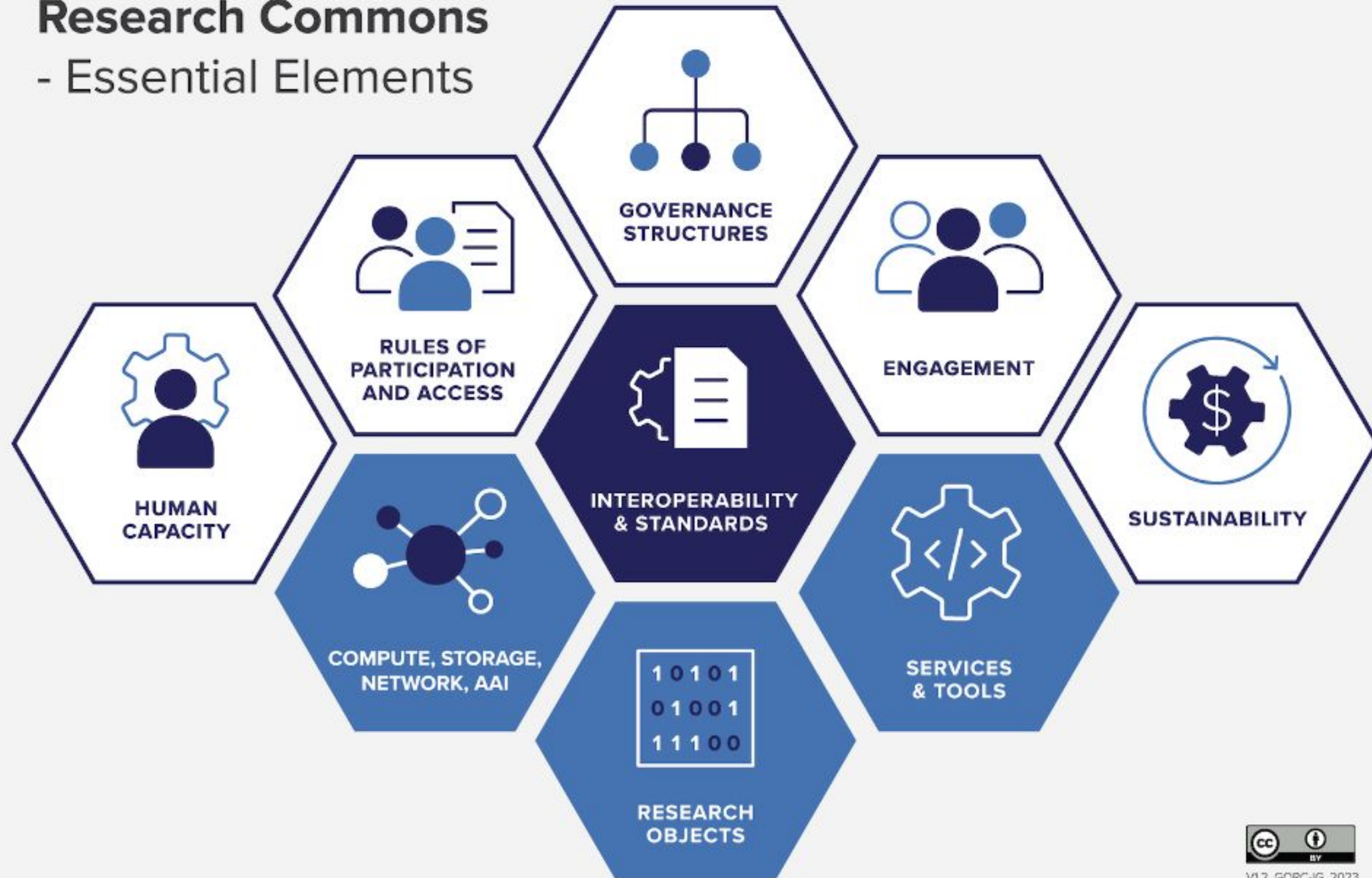
# Supporting the entire open science cycle (in EOSC)





- **AI democratisation puts AI into the hands of European researchers without specialised AI and technical knowledge, empowering them with open-source datasets, integrated computing infrastructure and tools which demand less knowledge of AI from the users so that they can build innovative AI software.**
- **EOSC nodes have the potential of addressing this need by integrating their capabilities to provide access to advanced computing, datasets, models, software, training and user support to European researchers.**

## Global Open Research Commons - Essential Elements



## EGI Contribution to the EOSC Federation

Discussion paper  
V.1.2 07-05-2024

### Abstract

Compute, storage, research objects, services and analytics tools are integral to the Open Science Commons and the realisation of the EOSC vision. This paper describes how EGI Federation envisages their provision as a collaborative effort of Research Infrastructures and e-Infrastructures, to jointly provide compute and co-located data services for international, grand challenge applications under the EOSC Node architecture.

This discussion paper reflects the EGI Federation's current thinking on collaborative service provision within the EOSC framework. We believe a strong, collaborative approach is essential for the success of EOSC. We welcome your feedback and insights, which will inform the further development of this position.

+31 (0)20 89 32 007  
contact@egi.eu  
www.egi.eu

